



PROPOSED L1220
LENGTH: 23 km
TOTAL PROPERTIES: 56
TOTAL LANDOWNERS: 53

EXISTING L1106

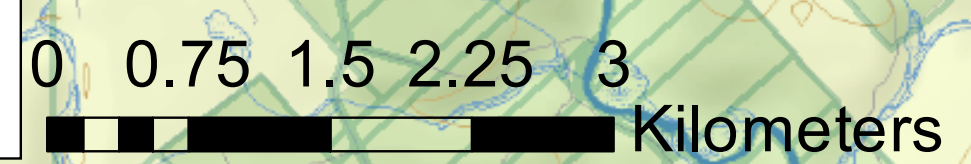
EXISTING L0104

**ESGENOÛPETITJ
FIRST NATION**

**PROPOSED 138 kV
SUBSTATION**
**EXISTING 69 kV
SUBSTATION**

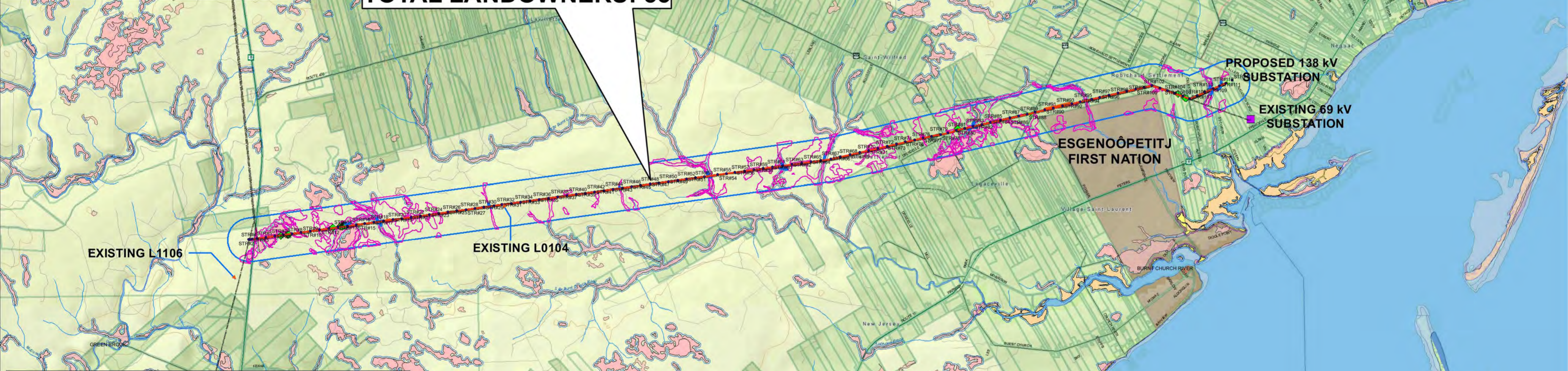
LEGEND

- Proposed L1220
- Existing Transmission Lines
- Proposed 138 kV Substation
- Existing 69 kV Substation
- Property Lines (SNB Database)





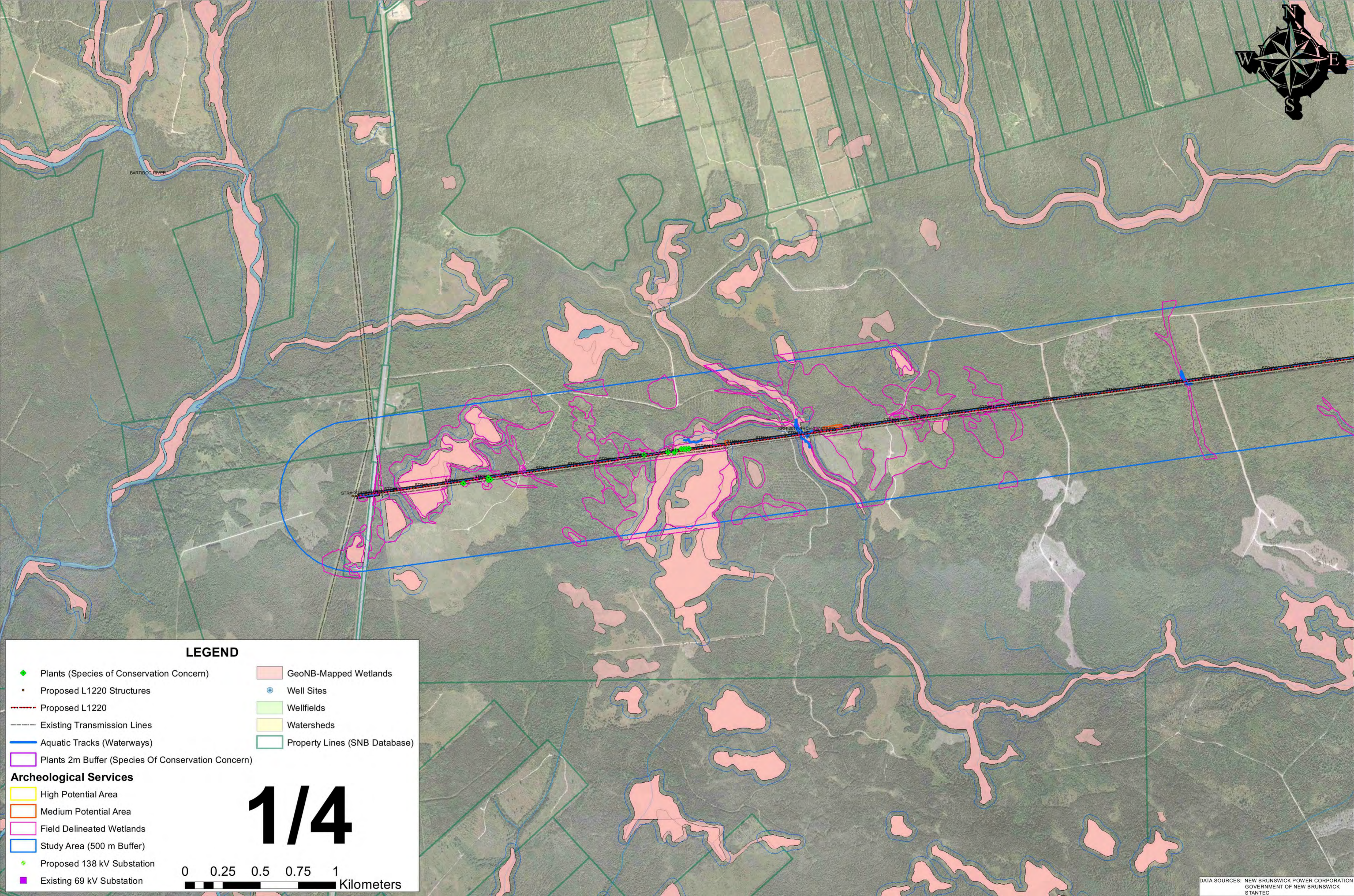
PROPOSED L1220
LENGTH: 23 km
TOTAL PROPERTIES: 56
TOTAL LANDOWNERS: 53



LEGEND

• Proposed L1220 Structures	GeoNB-Mapped Wetlands
— Proposed L1220	Well Sites
--- Existing Transmission Lines	Wellfields
◆ Proposed 138 kV Substation	Watersheds
■ Existing 69 kV Substation	≡ First Nations Land
□ Property Lines (SNB Database)	
— Aquatic Tracks (Waterways)	
◆ Plants (Species of Conservation Concern)	
□ Plants 2m Buffer (SOCC)	
Archeological Services	
□ High Potential Area	
□ Medium Potential Area	
□ Field Delineated Wetlands	
□ Study Area (500 m Buffer)	

0 0.75 1.5 2.25 3 Kilometers



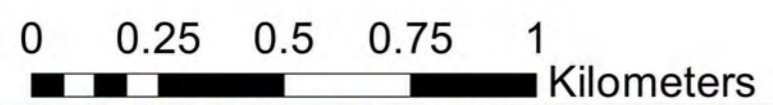
LEGEND

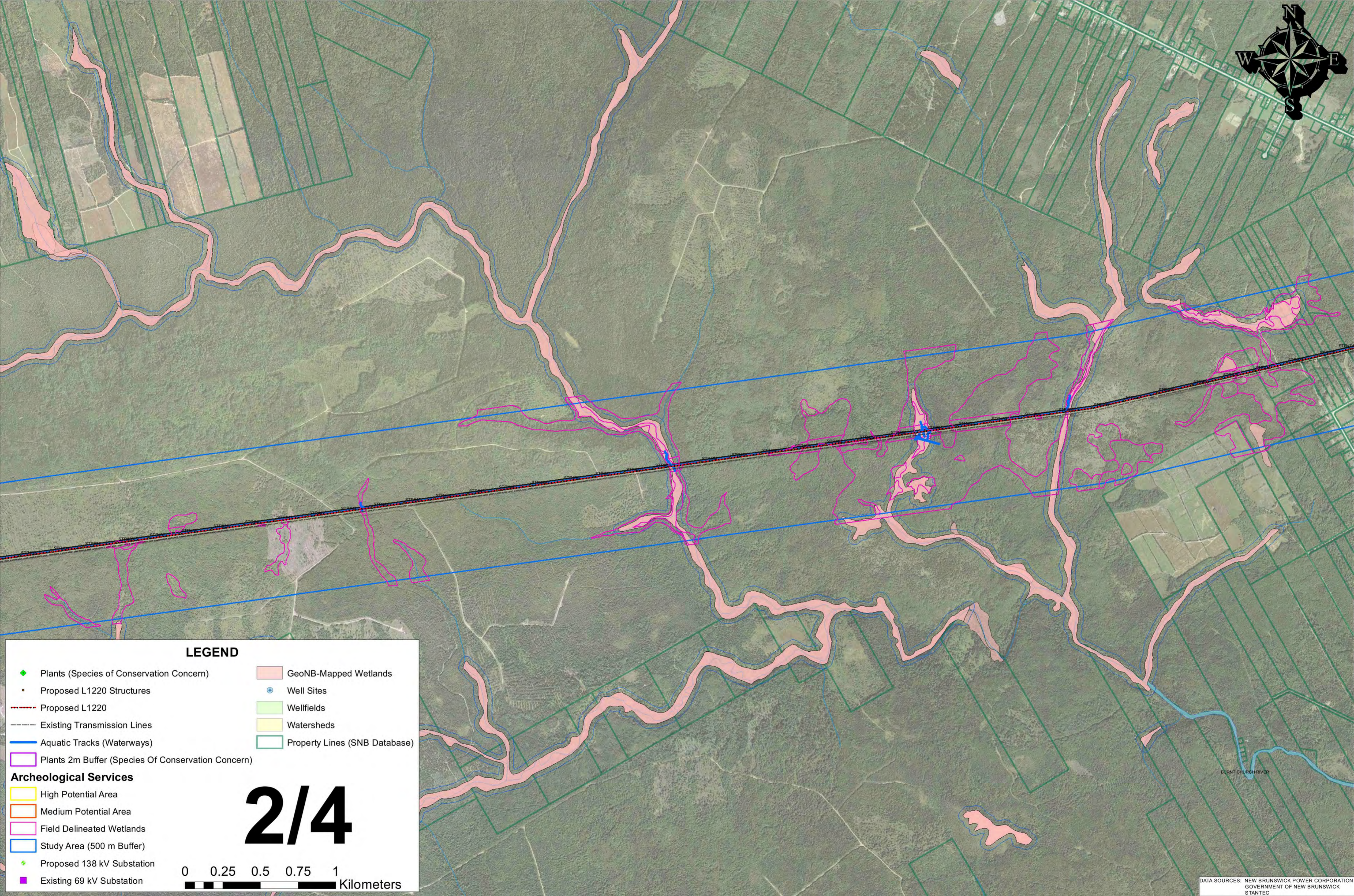
- ◆ Plants (Species of Conservation Concern)
- Proposed L1220 Structures
- Proposed L1220
- Existing Transmission Lines
- Aquatic Tracks (Waterways)
- Plants 2m Buffer (Species Of Conservation Concern)
- GeoNB-Mapped Wetlands
- Well Sites
- Wellfields
- Watersheds
- Property Lines (SNB Database)

Archeological Services

- High Potential Area
- Medium Potential Area
- Field Delineated Wetlands
- Study Area (500 m Buffer)
- ◆ Proposed 138 kV Substation
- Existing 69 kV Substation

1/4





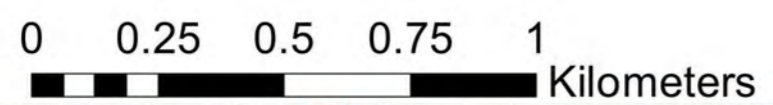
LEGEND

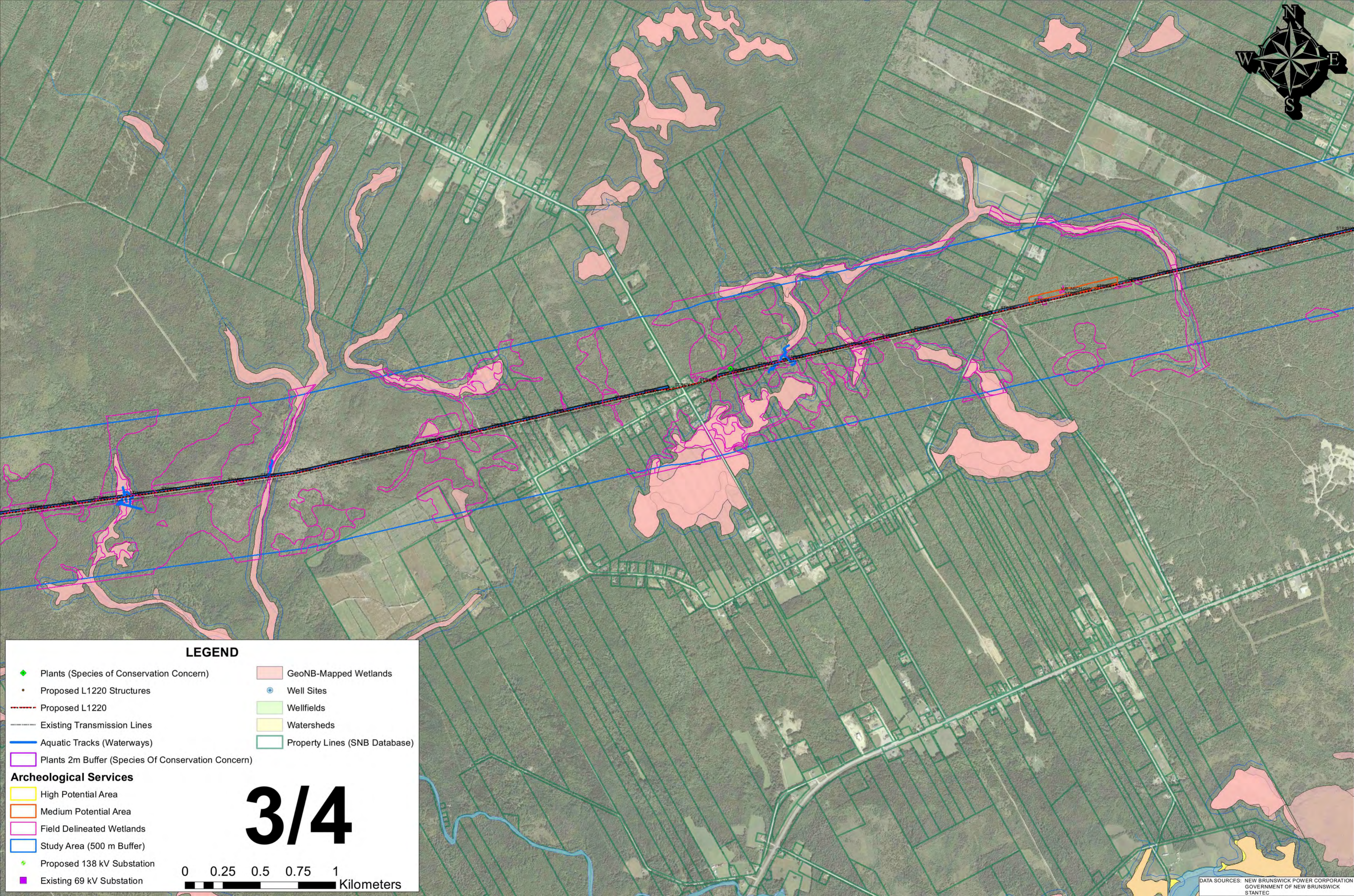
- ◆ Plants (Species of Conservation Concern)
- Proposed L1220 Structures
- - - Proposed L1220
- - - Existing Transmission Lines
- Aquatic Tracks (Waterways)
- Plants 2m Buffer (Species Of Conservation Concern)
- GeoNB-Mapped Wetlands
- Well Sites
- Wellfields
- Watersheds
- Property Lines (SNB Database)

Archeological Services

- High Potential Area
- Medium Potential Area
- Field Delineated Wetlands
- Study Area (500 m Buffer)
- ◆ Proposed 138 kV Substation
- ◆ Existing 69 kV Substation

2/4





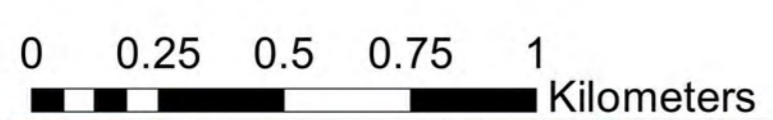
LEGEND

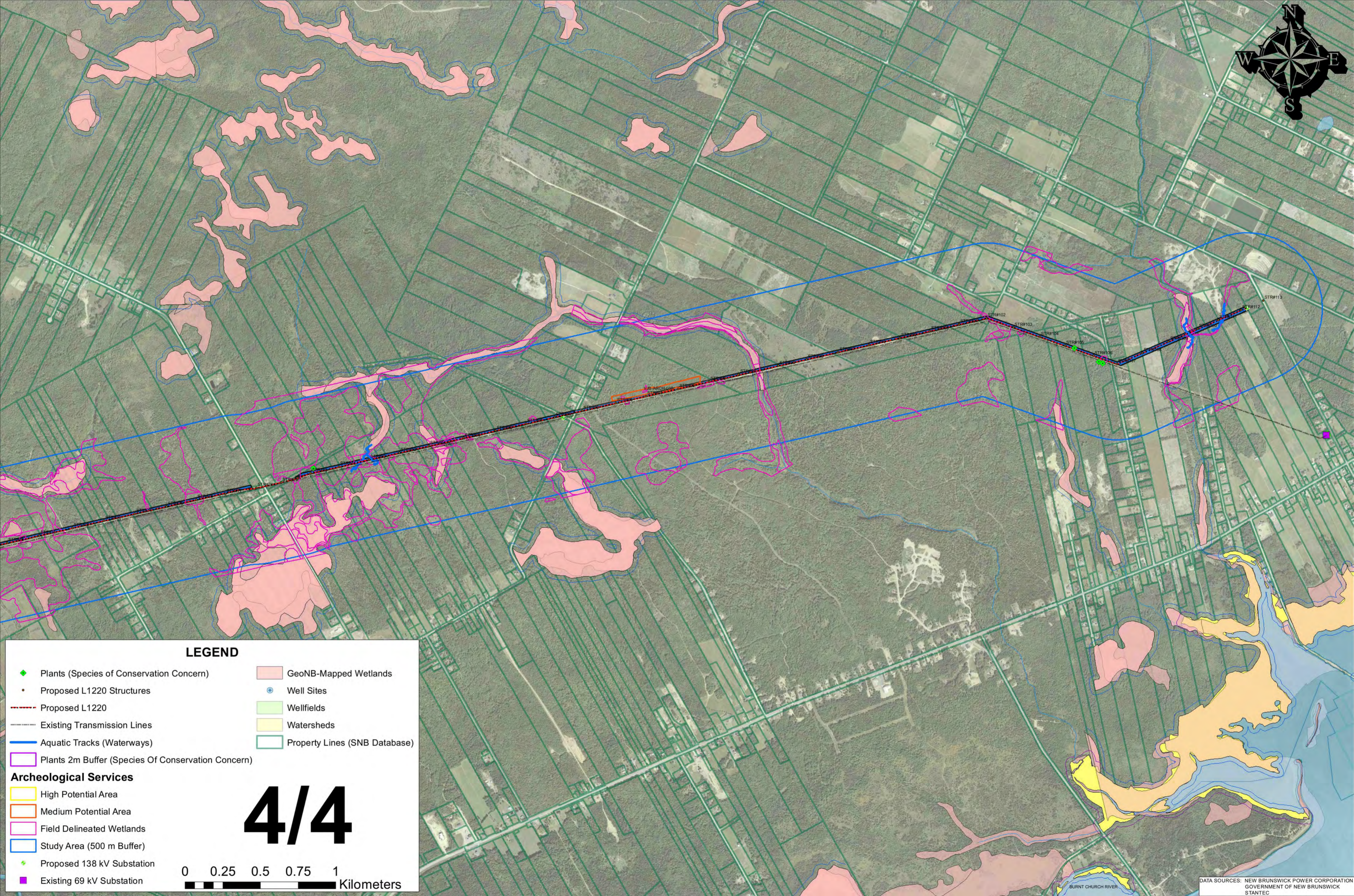
- ◆ Plants (Species of Conservation Concern)
- Proposed L1220 Structures
- Proposed L1220
- Existing Transmission Lines
- Aquatic Tracks (Waterways)
- Plants 2m Buffer (Species Of Conservation Concern)
- GeoNB-Mapped Wetlands
- Well Sites
- Wellfields
- Watersheds
- Property Lines (SNB Database)

Archeological Services

- High Potential Area
- Medium Potential Area
- Field Delineated Wetlands
- Study Area (500 m Buffer)
- ◆ Proposed 138 kV Substation
- ◆ Existing 69 kV Substation

3/4



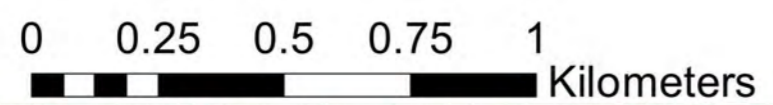


LEGEND

- ◆ Plants (Species of Conservation Concern)
- Proposed L1220 Structures
- Proposed L1220
- Existing Transmission Lines
- Aquatic Tracks (Waterways)
- Plants 2m Buffer (Species Of Conservation Concern)
- GeoNB-Mapped Wetlands
- Well Sites
- Wellfields
- Watersheds
- Property Lines (SNB Database)

Archeological Services

- High Potential Area
- Medium Potential Area
- Field Delineated Wetlands
- Study Area (500 m Buffer)
- ◆ Proposed 138 kV Substation
- Existing 69 kV Substation



4/4